

Compassionate Care & Peace of Mind

Discover peace of mind and compassionate care at Warren Center, where healing feels like home in every moment. We provide exceptional short-term rehabilitation and long-term care in a warm, supportive environment designed to help you or your loved ones feel safe, respected, and truly cared for.

[Explore Our Care](#)

[Get in Touch](#)



OUR MISSION!

Supports Toward Recovery and Comfort

At Warren Center, our mission is centered around your comfort, dignity, and recovery. Whether you're here for a short rehabilitation stay or long-term skilled nursing care, our experienced and friendly team is committed to providing five-star medical care with the warmth of home. Every resident is treated like family because to us, you are.

[Explore More](#) →

WHY CHOOSE WARREN

Compassionate Care You Can Trust

Providing compassionate, personalized care in a warm environment where comfort, dignity, and trust come first.



Compassionate Staff

Our dedicated team treats every resident with empathy, dignity, and personalized attention.



Coverage Options

We proudly accept Medicaid, Medicare, and all major health insurance plans.



Trusted by Hundreds of Families

Families choose Warren for consistent, high-quality care and peace of mind.



Timely & Reliable Services

From daily routines to emergency care, we ensure prompt and dependable support.



TESTIMONIALS

What Our Families Say



"Warren truly feels like home. The care my father received was beyond our expectations — kind, attentive, and professional at every step."



— Sarah L.
Daughter of Resident



"We were looking for a place that felt warm and trustworthy — Warren gave us that and more. The staff treat every resident like family."



— Priya M.
Family Member



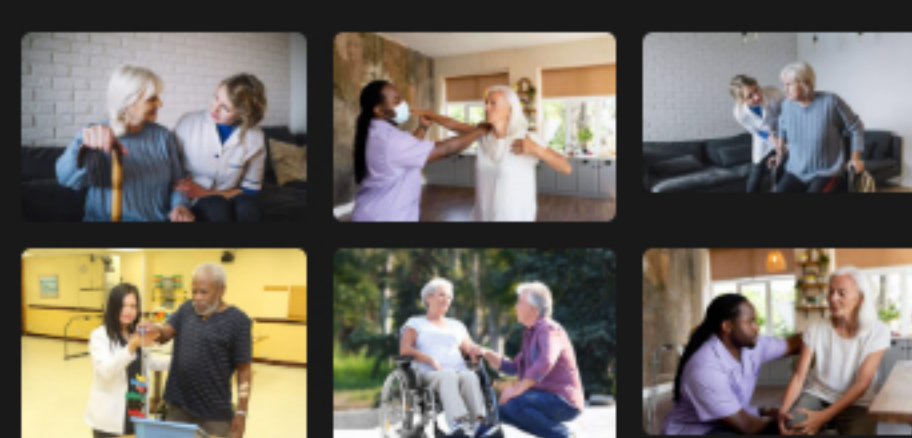
Ready for Compassionate Care?

Let Warren Center be your trusted partner in healing and support. Contact us today to schedule a tour or speak with our care team.

[Reach Out to Us](#) →

Useful Links

Our Gallery



Contact Information